



FNH-RI Newsletter

Edition 4 | December 2020

This is the fourth edition of the FNH-RI newsletter following the submission of the ESFRI proposal (PROSPECT) in September 2020. In this newsletter the FNH-RI community will be informed about the activities and actions taken in preparation of the next (preparatory) phase of the proposal starting in 2022. In preparation for this next phase, a communication plan is in development and the FNH-RI newsletter will therefore have a somewhat different content and layout. This updated newsletter will appear every six weeks. What will remain is that we will introduce a National Node in each edition and highlight specific interesting subjects regarding FNH-RI in general.

FNH-RI NEWS

FNH-RI BOARD

FNH-RI Board meetings were held on **the 9th of September**, **the 9th of November** and the **14th of December**. In the first (extra) meeting the focus was on the ESFRI Roadmap 2021 proposal (PROSPECT) that was submitted in September. The November meeting was mainly focussed on communication. A draft communication plan has been discussed and the introduction of the Basecamp as the application for internal communication and data sharing. In the last meeting the next (preparatory) phase of FNH-RI (PROSPECT) was discussed. In the figure below the proposed project breakdown into work packages is shown.

Breakdown work packages

No	Title	
Pillar 1 BUILDING GOVERNANCE		
WP 1	Legal structure, Governance and Statute development of FNH-RI ERIC	M1-36
WP 2	Organisational structure and policy development of FNH-RI	M1-36
WP 3	Financial structure, business plan and socio-economic impact of FNH-RI	M1-36
Pillar 2 PREPARE SERVICES		
WP 4	Prepare TED services	M1-30
WP 5	Prepare FACT services	M1-30
WP 6	Prepare Data services	M1-30
WP 7	Prepare the Citizens Data Platform as a unique FACT service	M1-32
Pillar 3 EXTEND USER COMMUNITY		
WP 8	Strengthening the user community	M1-30
WP 9	Strengthening the RI-community	M26-36
WP10	Coordination and Project Management of PREP FNH-RI	M1-36

The next meeting is scheduled on the 22nd of February.

FNH-RI COMMUNITY

After a short break the bilateral consultations by Karin Zimmermann and Khadija Nairi with the Head of Nodes have started again. In the previous round the focus was mainly on the process of national node development towards the submission of the FNH-RI (PROSPECT) proposal. We are now planning the follow up of these consultations. The focus for this next round of consultations will be somewhat different. They will focus more on preparing the implementation of the Science Case and the next steps towards enhancement of the RI.

This will be achieved along the following lines:

- identifying the services (DATA, FACT and TED) offered by the participating institutes and
- the way these services can be made accessible to contribute to achievement of the goals of FNH-RI.

OTHER DEVELOPMENTS & ANNOUNCEMENTS

- The eligibility review of FNH-RI proposal (PROSPECT) has been carried out and approved by the ESFRI delegation.
- In January 2021 a working group will explore the outlines for the “National Nodes” page on the FNH-RI website.
- A working session for identifying the target groups for FNH-RI was held on the 3rd of December. The results are input for the Communication Plan 2020 -2025.
- Basecamp has been introduced as the main communication tool and data sharing platform within FNH-RI. Access will be provided by mid-January 2021.
- From July 5, 7 and 8 2021 the [3rd International Master Class](#) “Healthy and Sustainable Diets: Synergies and Trade-offs”.



HIGHLIGHTED

GOVERNANCE FNH-RI

(by Karin Zimmermann)

Since 2018, the FNH-RI Foundation has acted as Head of the Nodes Committee, with representatives from each node that has already made a political and / or financial commitment to FNH-RI. At this stage, the existing management structure of FNH-RI, must be transformed into a supported transparent management structure in order to achieve the legal ERIC status.

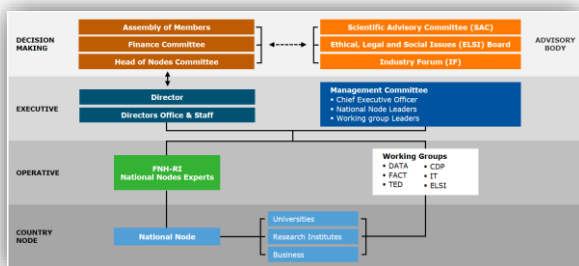
This process will be managed in collaboration with the national nodes. Within the new governance structure, a decision-making and advising role are defined. The ultimate decision-making bodies are:

- Assembly of Members; consisting of council of government representatives.
- Financial Committee; a committee consisting of financial experts from Government representatives.
- Head of Nodes Committee; consisting of representatives of the National Nodes.

The advisory councils are:

- Scientific Advisory Committee (SAC); representing the scientific domains.
- Ethical, Legal and Social Issues Board (ELSI); representing the RRI principle.
- Industry Forum (IF); representing the private user groups.

At operational level representatives of the DATA, F ACT and TED services, CDP entities, IT and ELSI working groups will be assigned per national node; each working group has representatives from each FNH-RI node. Therefore, all nodes will be able to contribute in the development of the minimum viable products of the FNH-RI services. This will strengthen the FNH-RI community.



Organisational chart of the governance **after** the preparatory phase

COMFOCUS

(by Karin Zimmermann)

In November the proposal Communities on Food Consumer Science (COMFOCUS) was granted by the EC.



COMFOCUS's brings together, integrates and opens up key national and regional research infrastructures in the field of food consumer science, from both academia and industry, ensuring their optimal use and joint development. It's mission is to advance the food consumer science community contributing to solving the societal problem of unhealthy food choices.

The end result will be a library of meta data and digital service tools called the COMFOCUS Knowledge Platform developed within the principles of FAIR and Responsible Research & Innovation (RRI) data use.

For more information see the [FNH-RI website](http://www.FNH-RI.eu) (projects)

This newsletter is also available online: (www.FNHRI.eu)

Contact: FNH-RI@wur.nl

Next edition: February 2021